



## Haverhill Methodist Church

Rev. Peter Goodhall  
The Manse  
24 Hamlet Road  
Haverhill  
Suffolk CB9 8EH

T: 01440 702422  
E: [methodistpeter@gmail.com](mailto:methodistpeter@gmail.com)



## Connect Issue 85

Friday 10<sup>th</sup> December 2021

*When Jesus spoke again to the people, he said, "I am the light of the world. Whoever follows me will never walk in darkness, but will have the light of life."*

*John 8:12*

**Prayer Chain:** If you'd like to request a prayer for yourself, or for someone you know, please email [kathy.cohen@btinternet.com](mailto:kathy.cohen@btinternet.com) (or phone 01440 762536) and your message will be forwarded to all those on the prayer email list (about 80 people).

**Prayer Ministry:** This is available after morning service each Sunday. Please approach someone wearing a lime green lanyard which has the words Prayer Ministry Team printed on it. Please remember our Churches Together online Prayer Wall [here](#).

- Guidance on Face Coverings

There has been no change in the Government advice with regards to worship.

With an increase in infections, we encourage face coverings be worn in worship and especially when singing.

During refreshments in the church hall, you may also wish to wear a face covering when not eating or drinking.

We shall continue to keep our premises ventilated.

We each play our part in looking after one another, especially when we are a large gathering of people.

Thank you for your cooperation.

- Sound system issues

We are aware that some are finding it difficult to hear what is being said during Sunday services.

**Hearing aid users**

There is no hearing aid loop this week. Please continue to use your hearing aid as usual without changing to the loop setting. New equipment has been ordered and will be installed as soon as available. Thank you for your patience

- Beetle Drive and Pudding Evening

Saturday 11<sup>th</sup> December from 5.00pm in the Hall.

If you've signed up, don't forget to turn up!

If you're bringing a bought pudding please make sure it is already cooked, we will be able to warm it up in Microwave or Oven, but would prefer not to have to cook it on the evening.

- Sunday 12th December – Morning worship and afternoon carol service

Our morning Communion service will be led by Chair of the East Anglia Methodist District Reverend Julian Pursehouse.

We look forward to welcoming Julian back among us.

Peter will be leading morning worship at St John's Methodist Church, Sudbury.

At 5pm on Sunday 12th December we welcome you to our carol service followed by refreshments in the church hall.

We look forward to seeing you.

- Sunday 19th December 10.30am – Christingle All-age worship

We hope you can join us for our Christingle service on Sunday 19th December, led by Sarah with support from Peter.

The service will include the opportunity to make your own Christingle orange. It is always a fun experience and a joyful time. We hope you can join us.

- Advent Tree Of Remembrance

This Advent and Christmas, in addition to our church Christmas tree, a small illuminated cherry blossom tree will again appear in our church entrance.

This will become our prayer tree of remembrance for our loved ones who have died whom we remember and think about at Christmas.

You are invited to write their name and any message on the label provided and hang it from one of the tree branches.

The tree will be lit up during our Advent and Christmas services. We receive the glad tidings of comfort and joy this Christmas.

- Big Christmas Card

There is a 'Big Christmas Card' available in the Church hall during December, for everyone to write their messages to the fellowship. Donations from the money saved by not sending individual cards will be given to the REACH Winter Crisis fund.

- Church Membership

If you would be interested in exploring Church Membership, please speak to our minister Peter and he would be pleased to have a conversation with you.

- Haverhill Prayer Walk Project

Thank you to those who have responded to the Haverhill Prayer Walking project which we heard about from Bill Reynolds last Sunday morning.

If you would like to be involved you can contact Bill at [bill.reynolds@rolcc.org.uk](mailto:bill.reynolds@rolcc.org.uk)

A reminder that the project will launch at the Salvation Army on Sunday 9th January at 1.30pm when the prayer walkers will be commissioned and sent out.

- Prayer Diary for December & January

Apart from the Sunday services here are some other dates to pray for:-

### December

- 11<sup>th</sup> Beetle Drive and Pudding Evening
- 12<sup>th</sup> Preacher – Chairman of the District – Julian Pursehouse
- 12<sup>th</sup> Family Carol service
- 24<sup>th</sup> Christmas Eve Holy Communion
- 25<sup>th</sup> Christmas Day Family Service

### January 2022

- 2<sup>nd</sup> Bring 'n' Share Lunch
- 20<sup>th</sup> Church/Circuit Meeting

## Extra Prayer Topics

*Peter, Jo and family* - Pray for Peter as he continues to lead us through this time of considerable change and uncertainty. Pray he will be guided by the Lord to bring us hope and to deepen our faith. Give thanks for the support he receives from Jo and ask the Lord to bless them as a family.

*Church & Circuit Steward & Local Preachers* Pray for those who support Peter in the practical and spiritual running of this Church especially in this challenging time of change. Pray for those bringing the Word of God to us each Sunday that we may all be blessed and our faith will deepen. Pray for the need for an extra Circuit Steward.

*Volunteers needed* – There are many areas of church life where volunteers are needed:-

*Next Door* – to assist in café

*Lantern* – helpers needed

*Sunday Club* – more leaders needed

*Illuminate* – Illuminate has new members. Ages range from 11-18 years. More leaders needed so that this group can be split into smaller age groups. Also God's guidance is needed to know how to meet the needs of the 16+ group.

*Coffee rota* – to assist making coffee after morning worship

*Town Pastors* – More pastors and prayers are still required.

*Open mind*- Give thanks for those who have offered to be helpers. Open Mind meets each Wednesday from 10am -12noon

*Reach* – Volunteers needed to assist in various aspects of this work. Give thanks for recent funding promised. Pray the staff will not be overwhelmed as the workload increases and that the right staff will be found to fill new posts.

Please pray for the right people to come forward to fill each of these positions.

*Revival* - Pray for the Lord's visitation upon this Church in power as He has promised.

*Our Fellowship* - Pray for those in our fellowship who are going through difficult times. Pray the Lord will meet them at their point of need. Pray for peace and healing.

# Christmas Carol Concert

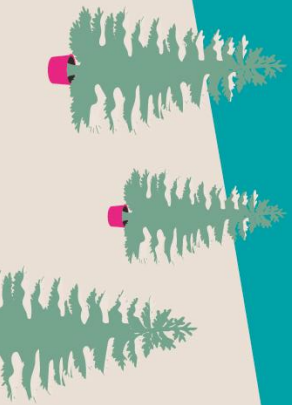
*come and sing your favourites!*

**Thursday 16th December at 7pm at St Mary's Church,  
High Street, Haverhill, Suffolk CB9 8AX.**

Also being broadcast live online, so if you can't be there in person,  
**sing along at home!**

Find out more at [www.stmaryshaverhill.org.uk/reachcarols](http://www.stmaryshaverhill.org.uk/reachcarols).

We'll also hear how the lives of local families in need have been changed through local charity REACH Community Projects and their supporters and volunteers, with an opportunity to give to their Christmas appeal (or you can give at [www.reachhaverhill.org.uk/christmas](http://www.reachhaverhill.org.uk/christmas)).





The news seems to be full of problems at the moment – problems that most of us don't have the power to do anything about. But I've got some good news for you:

**You may not be able to change the world – but you can change the world for one person!**

For local families struggling to even afford the basics and put food on the table, when an unexpected problem hits, they don't have any safety net in the form of savings. The problem becomes a crisis.

But when you make a donation and we combine it with our expertise, we can often get a family back on their feet again quite quickly.

And, if you give to our Christmas appeal, a generous local company could double your donation, meaning it will do TWICE as much good!

**Will you help someone else like Jerry to get back on their feet again?**

Jerry, one of our clients, longed to get a job. He's young and enthusiastic – but as he applied for dozens of roles and got rejection after rejection, he started to feel like he was a failure, that he'd never get anywhere. He felt like he was on the scrap heap at only twenty-two.

Finally, a local company emailed him with the offer of employment. Jerry was elated!

But there was a problem. They were based four miles away. There was no bus service there and he had no transport of his own. What he needed was a bike – but he had no money to buy one. His benefits barely covered the basics of food, bills and rent as it was.

For the want of a few pounds, he was in danger of losing this precious chance he'd waited for so long.

In desperation, Jerry contacted REACH to see if we could help. We managed to get hold of an old bike, and local company Aerocycles kindly serviced it for free! Generous people like you helped to buy Jerry a cycle helmet and lock.

The total cost was under £50 – but to Jerry, that support was priceless. It changed his life.

Now he's got that job, he can afford to do more than just survive. He can afford to dream a few dreams and make some plans for the future.

**Give a gift today - and your donation could be DOUBLED!**

When you donate to our appeal, a generous local company will match your donation so that it will do TWICE as much good. (See terms and conditions below.)



**A VERY BIG THANK YOU**  
for helping local families in need this Christmas!

**Terms and conditions:**

- *Single gifts up to the value of £100 will be matched (e.g. if you give a gift of up to £100 it will be doubled, if you give over £100 the first £100 will be doubled).*
- *If you set up a monthly gift for the first time, it will trigger the release of an extra £100 from our matched pot.*
- *If you already give monthly, and increase your monthly gift, it will trigger the release of £100 from our matched pot.*
- *Applies to gifts made online, direct to our bank ((account 90193717, sort code 60-10-21, Reach Community Projects) or cash or cheques dropped in at our main office (Wisdom Facilities Centre, 42 Hollands Road, Haverhill CB9 8SA) before 1st January 2022.*
- *Matched funding will continue until all the 'matched funding' pot has been used up (and we'll announce that by email and social media and on our donation page).*

- Dates to remember:

10 <sup>th</sup>	10pm-2am	Town Pastors on patrol – please pray for them
11 <sup>th</sup>	5pm	Beetle Drive & Pudding Night in the Church Hall
12 <sup>th</sup>	10.30am	Preacher: Julian Pursehouse – District Chair - Holy Communion Flowers: Church Christmas Flowers
	5pm	Family Carol Service followed by refreshments
		Deadline for next issue of Faithtime
13 <sup>th</sup>	8-8.45pm	Faithful Workout
14 <sup>th</sup>	11am-12	Tuesday Prayer in the Lounge (or in your own home)
15 <sup>th</sup>	10am-12	Open Mind in the Church Hall
	1-3pm	Young at Heart in the church hall – for everyone!
16 <sup>th</sup>	7pm	REACH Carol Concert @ St Mary's Church
19 <sup>th</sup>	10.30am	Preacher: Sarah Glasswell All Age & Christingle Flowers: Church Christmas Flowers
21 <sup>st</sup>	11am-12	Tuesday Prayer in the Lounge (or in your own home)
22 <sup>nd</sup>	10am-12	Open Mind in the Church Hall
24 <sup>th</sup>	10pm-2am	Town Pastors on patrol – please pray for them
	11.30pm	Christmas Eve Holy Communion (till 12.15am)
25 <sup>th</sup>	10am	Christmas Day family Service
26 <sup>th</sup>		No morning or evening services
31 <sup>st</sup>	10pm-2am	Town Pastors on patrol – please pray for them
<b>January</b>		
2 <sup>nd</sup>	10.30am	All Age Worship followed by Bring & Share lunch
5 <sup>th</sup>	10am-12	Open Mind in the Church Hall
7 <sup>th</sup>	10pm-2am	Town Pastors on patrol – please pray for them
9 <sup>th</sup>	10.30am	Preacher: Peter Covenant Service with Holy Communion
12 <sup>th</sup>	10am-12	Open Mind in the Church Hall
	1-3pm	Young at Heart in the church hall – for everyone!
14 <sup>th</sup>	10pm-2am	Town Pastors on patrol – please pray for them
16 <sup>th</sup>	10.30am	Preacher: Charmaine Slade
19 <sup>th</sup>	10am-12	Open Mind in the Church Hall
	1-3pm	Young at Heart in the church hall – for everyone!
22 <sup>nd</sup>	5.30-8pm	Church New Year Party in hall
23 <sup>rd</sup>	10.30am	Preacher: Peter

Information for publication in Connect, or on the Sunday Morning Scroll may be emailed to: [kathy.cohen@btinternet.com](mailto:kathy.cohen@btinternet.com) or handed directly to Kathy. Please try not to leave it to the last minute to send things.